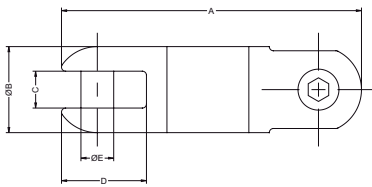


LINE PULLING SWIVEL - BRIGHT ZINC PLATED STEEL



Swivels designed for use in stringing high tension wires for electrical transmission and distribution. Swivels are important in pulling when the lines develop torsion during installation. Swivels will release torque and prevent it from reaching dangerous levels, which can cause damage to the cable. All swivels are stringently quality tested and inspected to ensure optimum performance and reliability.

Slingco part no.	Safe working load lb (kg)		A in (mm)	Ø B in (mm)	C in (mm)	D in (mm)	Ø E in (mm)
	Underground	Overhead					
ZSW2091	2,250 (1,015)	1,350 (610)	3 3/8 (86)	7/8 (22)	3/8 (10)	7/8 (22)	5/16 (8)
ZSW2092	3,500 (1,590)	2,100 (955)	4 (99)	1 (25)	7/16 (11)	11/16 (26)	3/8 (10)
ZSW2093	5,000 (2,240)	3,000 (1,345)	4 15/16 (126)	1 1/4 (32)	9/16 (14)	1 1/4 (32)	3/8 (10)
ZSW2094	7,000 (3,170)	4,200 (1,900)	5 3/16 (132)	1 3/8 (35)	9/16 (14)	1 13/32 (36)	1/2 (12.5)
ZSW2096	10,000 (4,530)	6,000 (2,700)	6 3/16 (157)	1 5/8 (41)	45/64 (18)	1 3/4 (45)	13/20 (16.5)
ZSW2097	15,000 (6,730)	9,000 (4,030)	7 5/16 (186)	2 3/32 (53)	25/32 (20)	2 1/8 (54)	23/32 (18)

3:1 factor of safety used, based on the ultimate load for underground use

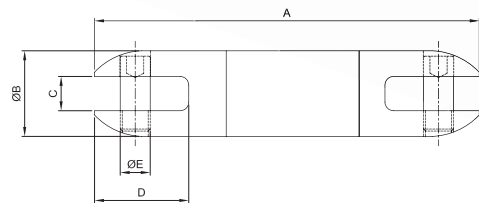
5:1 factor of safety used, based on the ultimate load for overhead use

Swivel and Cable Grip match-up

Revolving Eye	Flexible Eye MU	A-Type	Minimum Recommended Swivel
ZCS2177	ZCS1710	ZCS1799	ZSW2092
ZCS2178	ZCS1711	ZCS3020	ZSW2093
ZCS2179	ZCS1712	ZCS1800	ZSW2093
ZCS2180	ZCS1713	ZCS3522	ZSW2096
ZCS2181	ZCS1714	ZCS1801	ZSW2096
ZCS2182	ZCS1715	ZCS1802	ZSW2096
ZCS2183	ZCS1716	ZCS1803	ZSW2097

The above is intended as a rough guideline. The workload should be determined by the project requirements. A swivel with a higher working load than the recommended swivel may be used.

LINE PULLING SWIVEL - GALVANIZED



Slingco Line Swivels are designed to the highest specifications for underground and overhead pulling applications. All swivels are stringently quality tested and inspected to ensure optimum reliability and performance.

Slingco part no.	Safe working load lb (kg)		A in (mm)	Ø B in (mm)	C in (mm)	D in (mm)	Ø E in (mm)
	Underground	Overhead					
ZSW2649	4,000 (1,815)	2,400 (1,085)	4 3/4 (121)	1 1/4 (32)	19/32 (15)	1 3/16 (30)	3/8 (10)
ZSW2929	8,000 (3,630)	4,800 (2,175)	5 3/8 (136)	1 1/2 (38)	5/8 (16)	1 3/8 (35)	7/16 (11)
ZSW6122	10,000 (4,530)	6,000 (2,700)	7 (178)	1 7/8 (48)	3/4 (19)	1 3/4 (44)	5/8 (16)
ZSW6123	16,000 (7,142)	9,600 (4,355)	10 3/32 (258)	2 7/16 (62)	1 (25)	2 11/16 (68)	7/8 (22)
ZSW2857	30,000 (13,610)	18,000 (8,165)	11 1/8 (283)	2 1/2 (63)	1 (25)	2 3/4 (70)	7/8 (22)

3:1 factor of safety used, based on the ultimate load for underground use

5:1 factor of safety used, based on the ultimate load for overhead use

Swivel or Connector Model	ZSW2091	ZSW2092	ZSW2093	ZSW2094	ZSW2096 ZSW6122	ZSW2097	ZSW2929	ZSW2649	ZSW2857	ZSW6123	ZSW6554	ZSW6555	ZSW6556	ZSW6557 ZSW6558 ZSW6559 ZSW6560
Replacement Pin (HEX)	SWI2858	SWI2810	SWI2340	SWI2341	SWI2343	SWI2344	SWI2801	SWI2648	SWI2748	SWI5184	SWI2859	SWI2339	SWI5309	SWI5310

SAFETY NOTE: All Slingco Line Pulling Swivels are designed for straight line pulling and will not support side loads as would be encountered traveling over a bull wheel. Swivel selection should be based on pulling line diameter, grip size, opening dimensions, pin sizes, working load, and sheave groove diameter. Swivels are not designed for general lifting